



Description

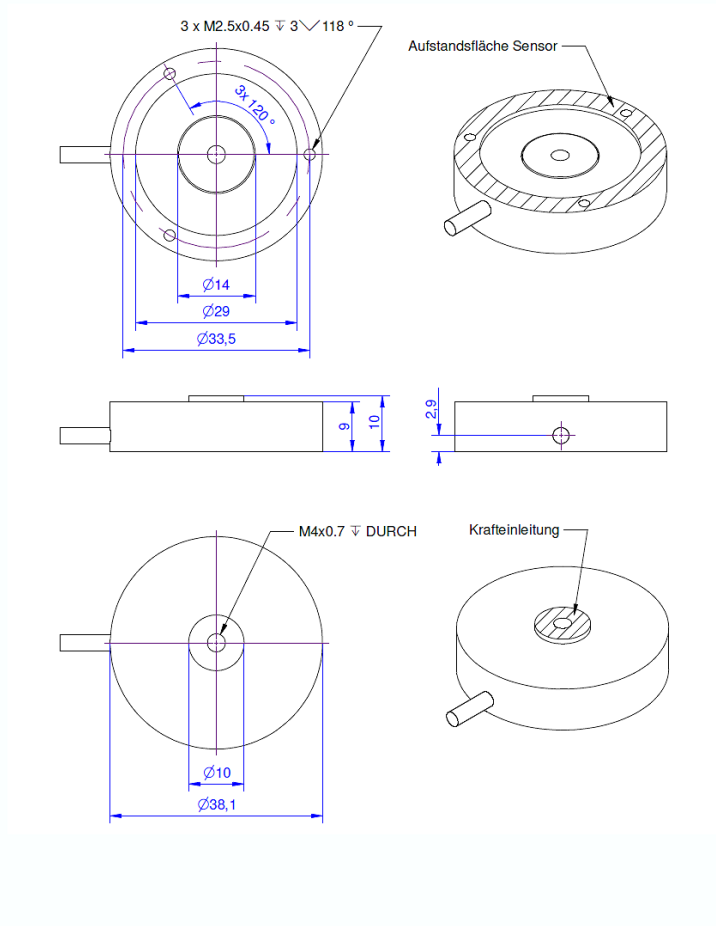
The miniature force sensor KM38 M4 is exceptionally suitable for measuring preload of bolts on account of its flat construction and its through hole.

But the inner thread M4x0.7 is also suitable for introduction of a force transmission. With a spherical cap the force transmission can be centered and made free of lateral force .

Through the introduction of half liners or prisms these force sensors can be adapted to the measurement of rolling forces.

The three M2.5 thread holes on the bottom side permit the attachment of the sensor or the fitting of a prism.

Dimensions



Technical Data

Force sensor

Type	Load cell
Force direction	Compression
Rated force F _x	20 kN
Force introduction	Inner thread
Dimension 1	M4x0.7
Sensor Fastening	Circular ring
Dimension 2	Ø38x4,5
Operating force	150 %FS
Rated displacement	0.06 mm
Lateral force limit	50 %FS
Material	Stainless steel
Natural frequency	5 kHz
Height	10 mm
Length or Diameter	38 mm

Electrical Data

Input resistance	780 Ohm
Tolerance input resistance	80 ±
Output resistance	703 Ohm
Tolerance output resistance	5 ±
Insulation resistance	2x10 ⁹ Ohm
Rated range of excitation voltage f	2.5 ... 5 V
Operating range of excitation voltage f	1 ... 10 V
Zero signal	0.05 mV/V
Rated output	1 mV/V / FS

Precision

Accuracy class	1%
Relative linearity error	0.1 %FS
Relative zero signal hysteresis	0.05 %FS
Temperature effect on zero signal	0.02 %FS/K
Temperature effect on characteristic value	0.02 %RD/K
Relative creep	0.1 %FS

Connection Data

Connection type	4 conductor open
Name of the connection	STC-31V-4
Cable length	3 m

Temperature

Rated temperature range f	-10 ... 70 °C
Operating temperature range f	-10 ... 85 °C
Storage temperature range f	-10 ... 85 °C

Environmental protection

IP66

Abbreviation: RD: „Reading“; FS: „Full Scale“;








1) The exact nominal sensitivity is indicated in the test report;

Pin Configuration

Symbol	Description	Wire colour
+Us	positive bridge supply	red
-Us	negative bridge supply	black
+Ud	positive bridge output	green
-Ud	negative bridge output	white

*Pressure load: positive output signal.
Shield- transparent.*

accessories

	Description	Description
	Calibration Certificate kn/20/5	Factory calibration certificate for force to 20 kN in accordance with DIN EN ISO / IEC 17025 for test materials monitoring according to DIN ISO 9001 : 2008 with 5 load levels and 3 series of measurements.
	KM38 Calotte	Calotte for sensor KM38
	GSV-1H	Measuring amplifier in top-hat rail housing for sensors with strain gauges. Analogue output -10V...+10V, limiting frequency 250Hz, 4 input sensitivities from 2.0mV/V.
	GSV-2TSD-DI	Measuring amplifier in desktop-housing for sensors with strain gauges. Serial port RS232, USB port, analogue output -5V...+5V, limiting frequency 260Hz, input sensitivity 3.5mV/V.
	GSV-3USB	Measuring amplifier in aluminum housing for sensors with strain gauges. Limiting frequency 1250Hz, input sensitivity 2 / 3,5 / 10 mV/V.
	GSV-6K	Analogue measuring amplifier in plug housing for sensors with strain gauges. Analogue output configurable, TEDS, sampling frequency 10Hz ... 25kHz, input sensitivity configurable 0.1mV/V ... 8mV/V
	High Accuracy Calibration/1D	