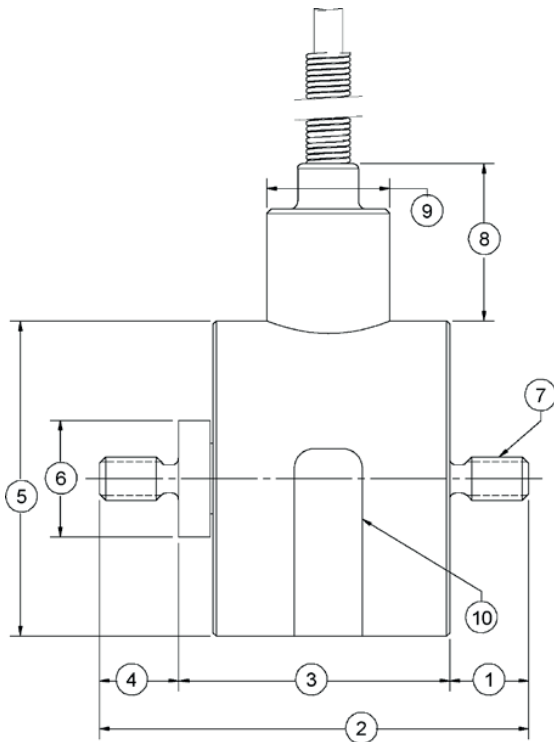


- Capacities from 250 to 1000g
- Proprietary Interface temperature compensated in gages
- Tension and compression
- Small size
- Environmentally sealed
- Overload protected to 32x capacity



**DIMENSIONS**

See Drawing	CAPACITY			
	250g		500g, 1000g	
	inch	mm	inch	mm
(1)	0.25	6.4	0.25	6.4
(2)	1.36	34.5	1.36	34.5
(3)	0.86	21.8	0.86	21.9
(4)	0.25	6.4	0.25	6.4
(5)	1.00	25.4	1.00	25.4
(6)	0.37	9.4	0.37	9.4
(7)	# 6 - 32 UNC-3A (Both Ends)			
(8)	1.11	28.2	0.50	12.7
(9)	0.44	11.2	0.39	9.9
(10)	Model, Capacity, Serial Number			



**SPECIFICATIONS**

	250g	500g	1000g
<b>CAPACITY</b>	250g	500g	1000g
<b>ACCURACY – MAX</b>			
Nonlinearity-% FS	±0.15	±0.15	±0.15
Hysteresis-% FS	±0.15	±0.15	±0.15
Nonrepeatability-% RO	±0.15	±0.15	±0.1
Creep, in 20 min-%	±0.1	±0.1	±0.05
<b>TEMPERATURE</b>			
Compensated Range-°F	50 to 150	50 to 150	50 to 150
Compensated Range-°C	10 to 66	10 to 66	10 to 66
Operating Range-°F	-40 to 185	-65 to 250	-65 to 250
Operating Range-°C	-40 to 85	-54 to 121	-54 to 121
Effect on Output-%/°F – MAX	±0.30	±0.20	±0.20
Effect on Zero- % RO/°F – MAX	±4.00	±2.00	±1.00
<b>ELECTRICAL</b>			
Rated Output-mV/V (nominal)	1.50	.75 ±0.15	1.50
Zero Balance-%RO	±0.30	±2.0	±0.30
Bridge Resistance-Ohm (nominal)	±2.0	±2.0	±2.0
Excitation Voltage-MAX	540 ±5.4	350 ±3.5	350 ±3.5
Insulation Resistance-Megohm	7 Polarized (Booster Amplifier)	7 VDC or VAC	7 VDC or VAC
<b>MECHANICAL</b>			
Calibration	5000	5000	5000
Safe Overload-% CAP	Tension	Tension	Tension
Cable Length-ft	3200	1600	800
	5	5	5

**STANDARD CONFIGURATION**

5 ft. Integral Cable

**OPTIONS**

Extra Cable Length

**ACCESSORIES**

Instrumentation

WMCP  
Revised 11/2/2011