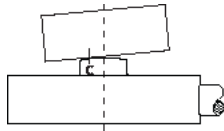


ConvexBT LOAD BUTTON LOAD CELL (U.S. & METRIC)

FEATURES & BENEFITS

- Superior to any other load button
 - Integral temperature compensation
 - Enhanced eccentric load rejection
 - Multi-point calibration
 - Integral load button
 - Small diameter
 - Environmentally sealed
 - Heat treated stainless steel
- * 5 (0.02 kN) capacities to be released soon.



OFF CENTERLINE MISALIGNMENT

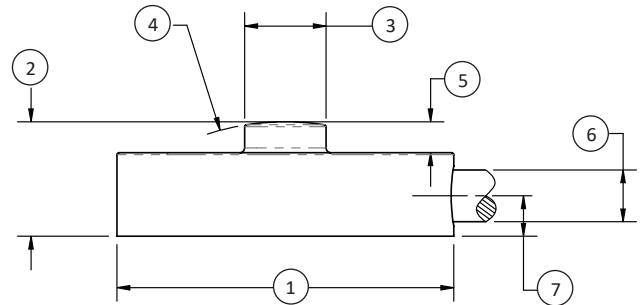
SPECIFICATIONS

Parameter		Capacity
Measuring Range	lbf	*5, 10, 25, 50, 100, 250, 500, 1000
	kN	*0.02, 0.04, 0.11, 0.22, 0.44, 1.11, 2.22, 4.44
Rated Output – mV/V		2.00 ± 20%
Nonlinearity – %FS		± 0.25
Hysteresis – %FS		± 0.25
Static Error Band – %FS / MAX		± 0.50
Nonrepeatability – %RO 0.5% @ 1°		± 0.10
Temperature		
Compensated Range	°F	60 to 160
	°C	21 to 77
Operating Range	°F	-40 to 175
	°C	-40 to 80
Effect on Zero – %RO / deg		± 0.50
Effect on Output – % / deg		± 0.20
Creep, 20 minutes – %		± 0.15
Input Resistance – Ohm		350 +50/-3.5
Output Resistance – Ohm		350 ± 3.5
Insulation Resistance – Megohm		5000
Zero Balance – %RO		± 2
Barometric Sensitivity		0
Overload Ratings		
Safe, axial load – %CAP / MAX		150
Ultimate, axial load – %CAP / MAX		300
Deflection at capacity - inch / Nom		0.0011
Excitation, nominal – VDC		5
Excitation, maximum – VDC or VAC		7
Weight (without cable) / Nom	lb	< 0.02
	kg	< 0.009
Material		17-4 PH Heat Treated Stainless Steel

STANDARD CONFIGURATION



MODEL LBSU-100 (Shown)



DIMENSIONS

See Drawing	Model					
	LBSU-5-50		LBSU-100-250		LBSU-500-1000	
	Capacity					
	U.S. (lbf)	Metric (kN)	U.S. (lbf)	Metric (kN)	U.S. (lbf)	Metric (kN)
	*5, 10, 25, 50	*0.02, 0.04, 0.11, 0.22	100, 250	0.44, 1.11	500, 1000	2.22, 4.44
	in	mm	in	mm	in	mm
(1)	Ø0.375	Ø9.53	Ø0.5	Ø12.70	Ø0.75	Ø19.1
(2)	0.13	3.3	0.17	4.3	0.25	6.4
(3)	Ø0.09	Ø2.3	Ø0.12	Ø3.1	Ø0.24	Ø0.8
(4)	SR0.25	SR6.4	SR0.38	SR9.5	SR4.0	SR101
(5)	0.03	0.7	0.05	1.2	0.03	0.8
(6)	Ø0.08	Ø2.0	Ø0.08	Ø2.0	Ø0.08	Ø2.0
(7)	0.05	1.3	0.06	1.5	0.1	2.5

International System of Units (SI) dimensions and capacities are provided for conversion only. Standard products have U.S. capacities and dimensions. SI capacities available upon special request and at an additional cost.

WIRING DIAGRAM

