

LP LOAD PIN (U.S. & METRIC)

FEATURES & BENEFITS

- Capacities range up to 3,000K lbf (1,360 MT)
- Designed to replace pins or bolts that carry a load
- Stainless steel construction
- Used with clevises, or pulley shafts to monitor loads
- Custom designs

Industry applications:

- Tension / Compression Measurements
- Clevis Pin / Shackle Loading
- Sprockets & Pulley Axle
- Crane, Lifting & Winch System
- Mooring Line Tension Measurements
- Hydraulic Systems

Interface Load Pins are made with a dual-shear design and are designed which for center-loading with support from both ends. Interface load pins are strain gage based, the strain gages are installed in the inside-center, neutral axis of the load pin where they are protected from both physical damage and the environment. A full Wheatstone Bridge ensures the best specifications, while the physical design ensures proper alignment and anti-rotation of the application.

OPTIONS

- Integral connector
- Amplification (5VDC, 10VDC, 4-20mA)
- Wireless communication
- Bidirectional loading
- Dual bridge
- ATEX Approval
- High Temperature
- Submersible
- TEDS
- Anti-rotation Plate
- Shackles

STANDARD CONFIGURATION



Model 3461EGY-3K (Shown)

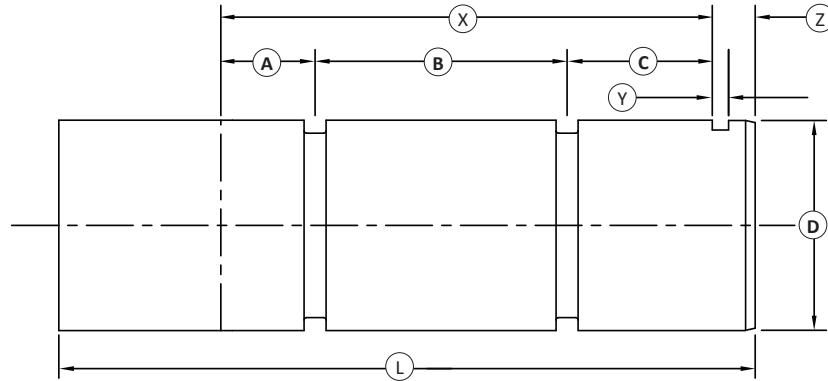
SPECIFICATIONS

ACCURACY – (MAX ERROR)		
Nonlinearity – %FS		±0.2 to 1.5 (typically) depending on pin geometry
Nonrepeatability – %FS		±0.1
TEMPERATURE		
Compensated Range	°F	+14 to +158
	°C	-10 to +70
Operating Range	°F	-4 to +158
	°C	-20 to +70
Zero Temperature Coefficient – % of Rated Load / °C		±0.1
Span Temperature Coefficient – % of Rated Load / °C		±0.1
ELECTRICAL		
Rated Output – mV/V (Nominal)		1.5
Zero Balance – %RO		±1
Bridge Resistance – Ohm		350, 1000, 5000
Excitation Voltage – VDC MAX		15.0
Insulation Resistance – Megohm@VDC		500 @ 500
MECHANICAL		
Standard Calibration		Compression
Safe Overload – %Capacity		150
Ultimate Overload – %Capacity		300
Cable Length	ft	16.4
	m	5
Environmental Rating		IP67
Material		Heat Treated Steel or Stainless Steel



LP LOAD PIN (U.S. & METRIC)

LOAD PIN CONFIGURATOR



SECTION ONE PHYSICAL DIMENSIONS

Required Dimensions:				Computed Dimensions:					
	in	mm		in	mm	X	Y	Z	L
A:			C:						
B:			D:			<i>*estimated - final dimensions may vary</i>			

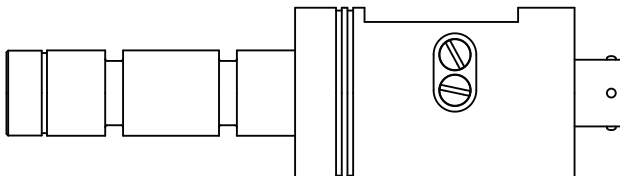
SECTION TWO FEATURES & APPLICATION

Application:		
1. Static Force / Load		4. Tractor Draw Bar Pull
2. Dynamic Force / Load		5. Mooring Linkage
3. Hoisting Load		6. Fork Lift Loading
		7. Conveyor Loading
		8. Line Tensiometer
		9. Other

Capacity:	Output Signal:	ATEX Required:
tonne	mV/V	No
K lbf	4-20mA	ATEX"D"
kN	0-10V	ATEX"N"
	RS485	ATEX"I"

EN 60529 Protection Level:	Cable Length:
IP65	
IP66	
IP67	
IP68	
IP69K	

MOUNTING CONFIGURATION



Various mounting configurations are available.

Shown: Typical mounting with anti-rotational slot near the end; connector output at housing base.