

Uniaxial  
Piezoresistive  
Measurement Range:  $\pm 500$  to  $\pm 2000$  g  
Residual Noise:  $< 10 \mu V$   
Frequency Range ( $\pm 5\%$ ): DC to 2500 Hz  
Aluminum Housing  
**Made in Germany**



## MEMS Piezoresistive Accelerometer

The key components in piezoresistive accelerometers are high-quality micro-electro mechanical systems (MEMS) that are fabricated from piezoresistive silicon. A bending due to external forces causes deformation of the resistors, leading to a change in its resistance. The resistors are configured into a Wheatstone bridge circuit, which provides a change of the voltage output signal that is proportional to acceleration. This technology also enables the measurement of dynamic or static and constant accelerations. Furthermore, very high measurement ranges are achievable due to the mechanical design.

## Description

The piezoresistive accelerometers are based proven MEMS technology, in which four variable resistors are configured as a Wheatstone bridge. The uniaxial ASC 61C1, ASC 62C1 and ASC 66C1 feature a wide dynamic range from 0 Hz to 2.5 kHz and outstanding impact resistance up to 5,000 g. In addition, the lightweight design allows its use in applications where the mass load of the test structures has to be minimized.

The sensors feature a lightweight, reliable aluminum housing in different form factors with protection class IP67 for ASC 61C1 and ASC 62C1 as well as a protection class IP65 for ASC 66C1. All accelerometers are equipped with an integrated cable with configurable length and connectors.

Piezoresistive accelerometers are used in high-impact and shock applications such as side and frontal impact tests in the automotive sector. With a measuring range of up to 2,000 g they therefore belong to the category of ASC crash sensors, which can be configured with TEDS and EQX data.

## Features

- Wheatstone Bridge Circuit
- DC Response, Gas damped
- Very High Shock Resistance
- Lightweight and Compact Design

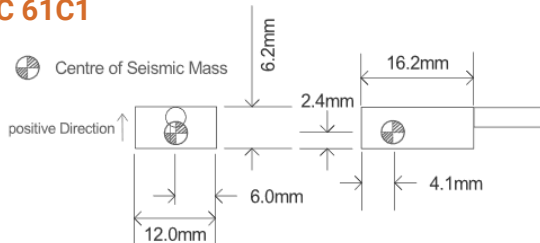
## Options

- Customized Cable Length
- Customized Connector
- TEDS Module

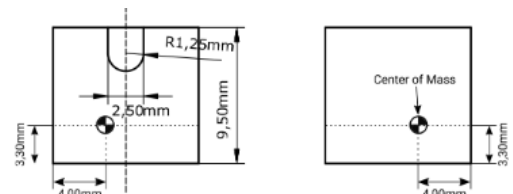
## Applications

- Automotive Crash Testing
- High Impact and Shock Measurements
- Drop Tests

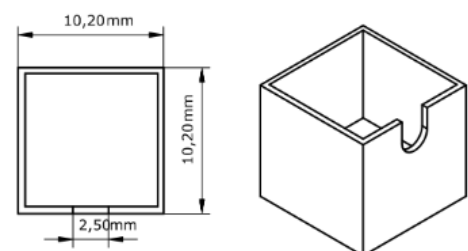
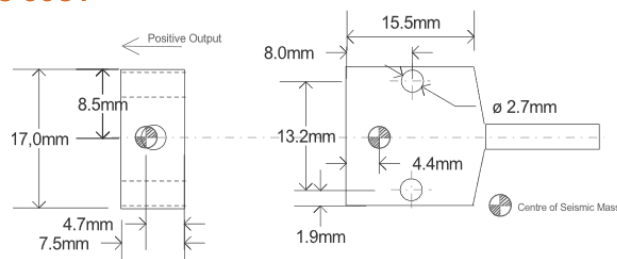
### ASC 61C1



### ASC 62C1



### ASC 66C1



**Typical Specification**

**Dynamic**

Measurement Range	g	±500	±1000	±2000
Scale Factor (sensitivity)	mV/g	0.40	0.15	0.13
Please note: Output is ratiometric to Excitation Voltage				
Frequency Response Range (±5 %)	Hz	0 to 2500		
Resonance Frequency	kHz	15	15	26
Amplitude Non-Linearity	% FSO	1.0		
Transverse Sensitivity	%	<3		

**Electrical**

Excitation Voltage	V	3 to 10		
Offset (bias)	mV	±50		
Residual Noise	µV	<10		
Insulation Resistance	MΩ	>100		
Isolation	Case Isolated			

**Environmental**

Temperature Coefficient of the Scale Factor	%/K	-0.25 to -0.15		
Temperature Coefficient of the Offset (max)	g/K	±0.25	±0.5	±1
Operating Temperature Range	°C	-20 to +80		
Storage Temperature Range	°C	-20 to +80		
Shock Limit (0.1 ms, half-sine)	g	5000		
Protection Class	ASC 61C1: IP67 ASC 62C1: IP67 ASC 66C1: IP65			

**Physical**

Sensing Element	MEMS piezoresistive			
Case Material	Anodized Aluminum			
Connector at Cable End	Optional			
Mounting	ASC 61C1: Adhesive ASC 62C1: Adhesive ASC 66C1: Adhesive   Screw Holes			
Weight (without cable)	gram	ASC 61C1: 3 ASC 62C1: 3 ASC 66C1: 5		
Cable	13 gram per meter   AWG 30   Polyurethane (PUR)   Diameter 3.0 mm			

**Sensor Calibration**

**Factory Calibration (supplied with the sensor)**

Part Number	#15054	#14851
Calibration Method	Medium-frequency Sinusoidal	Pendulum
Measurement Range (sensor)	±500   ±1000   ±2000	±500   ±1000   ±2000
Description	Applied Frequency Range from 40 Hz to 2500 Hz at 200 m/s <sup>2</sup> Input Amplitude, Reference Frequency for Determination of Scale Factor is 80 Hz.	One shock each at 40 g, 80 g, 120 g, 160 g and 180 g

**Calibration according DIN ISO 17025 (order separately)**

Part Number	#15055	#14722
Calibration Method	Medium-frequency Sinusoidal	Pendulum
Measurement Range (sensor)	±500   ±1000   ±2000	±500   ±1000   ±2000
Description	Applied Frequency Range from 35 Hz to 3150 Hz at 200 m/s <sup>2</sup> Input Amplitude, Reference Frequency for Determination of Scale Factor is 80 Hz.	One shock each at 40 g, 60 g, 80 g, 100 g, 120 g, 140 g, 160 g, 180 g and 200 g

The conversion factor 1 g corresponds to 9.80665 m/s<sup>2</sup>. If any other calibration procedure is required, don't hesitate to contact us. Our services include both factory calibration and calibration in accordance with DAkkS guidelines. Furthermore, sensors have to be calibrated regularly to ensure accurate and precise results. On request we will be glad to remind you of the next scheduled calibration of your sensors.

**Cable Code / Pin Configuration (4 Wire System)**

	Pin	Color Code	Description
1	Supply +	Red	excitation voltage +3 to +10 VDC
2	Supply -	Black	GND
3	Signal +	Green	positive, analog output voltage signal
4	Signal -	White	negative, analog output voltage signal

**Ordering Information**

Series	Model	- Range [g]	- Cable Length [m]	Connector & Pinout
ASC 6	1C1	500	6	A
	2C1	1k		
	6C1	2k		

*Example:*

**ASC 61C1-500-6A**

Ordering information are based on standard configurations. All customized versions regarding connector and/or pinout will lead to a corresponding product match code. Standard length of the integrated cable is 6 meters. However, different customized cable lengths are possible on request. Standard version has no connector at the cable end which is identified by "A" in the product match code. However, it is possible to assemble almost all connector types during production.

## Safety Precaution for Installing and Operating

This data sheet is a part of the product. Read the data sheet carefully before using the product and keep it available for future operation. Handling, electrical connections, mounting or any other work performed at the sensor must be carried out by authorized experts only. Appropriate safety precautions must be taken to exclude any risk of personal injury and damage to operating equipment as a result of a sensor malfunction.

## Handling

The sensor is packaged in a reliable housing to protect the sensing elements and integrated electronic components from the ambient environment. However, poor handling of the product can lead to damages that may not be visible and cause electrical failure or reliability issues. Handle the component with caution:


- Avoid shocks and impacts on the housing, such as dropping the sensor on hard surface
- Never move the sensor by pulling the cable
- Make sure that the sensor is used within the specified environmental conditions
- Transport and store the sensor in its original or similar packaging
- The sensor should be mounted on a stable flat surface with all screws tightened or other mounting options
- Avoid any deformation during mounting the sensor
- Mounting tolerances may have an influence on the measured result

## Electrical

ASC's inertial sensors are working with many established data acquisition systems. However, make sure that a proper DAQ is used, for the corresponding operation principle of the sensor. Furthermore, suitable precautions shall be employed during all phases of shipment, handling and operating:

- Active sensor pins are susceptible to damage due to electrostatic discharge (ESD)
- Make sure that the sensor is used within the specified electrical conditions
- Check all electrical connections prior to initial setup of the sensor
- Completely shield the sensor and connecting cable
- Do not perform any electrical modifications at the sensor
- Do not perform any adaptations on the wiring or connectors while the device under power
- Never plug or unplug the electrical connection while the sensor is under power
- When a certain pin is not used during operation, make sure that the pin is insulated

## Quality

- We have a quality management system according to ISO 9001:2015.
- The Deutsche Akkreditierungsstelle GmbH (DAkkS) has awarded to our calibration laboratory the DIN EN ISO/IEC 17025:2018 accreditation for calibrations and has confirmed our competence to perform calibrations in the field of mechanical acceleration measurements. The registration number of the certificate is **D-K-18110-01-00**.
-  -compliant.

Made in Germany



analyzing



monitoring



testing



measuring